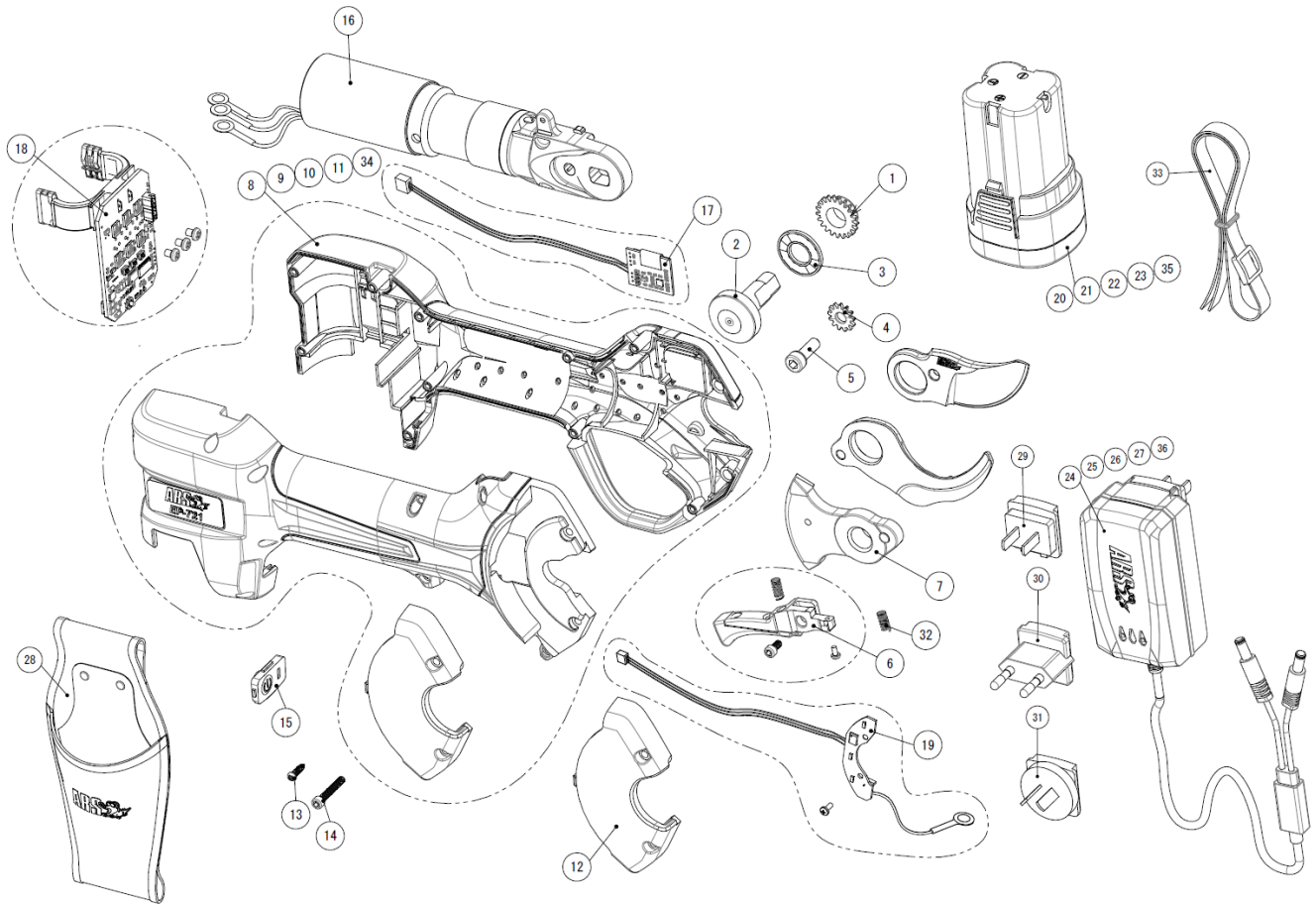


EP-721



PARTS NO.	SPECIFICATION	PARTS NO.	SPECIFICATION
①	SP-EP-079 CENTER NUT FOR THE BLADES	②②	SP-EP-068 LITHIUM ION BATTERY W/ SPANISH WARNING LABEL
②	SP-EP-080 CENTER BOLT FOR THE BLADES	②③	SP-EP-069 LITHIUM ION BATTERY W/ KOREAN WARNING LABEL
③	SP-EP-081 BEARING	②④	SP-EP-070 BATTERY CHARGER W/ ENGLISH WARNING LABEL, CHARGING PLUG TYPE-C,O
④	SP-EP-049 NUT RETAINER	②⑤	SP-EP-071 BATTERY CHARGER W/ PORTUGUESE WARNING LABEL, CHARGING PLUG TYPE-C
⑤	SP-EP-082 BOLT FOR NUT RETAINER	②⑥	SP-EP-072 BATTERY CHARGER W/ SPANISH WARNING LABEL, CHARGING PLUG TYPE-A,C
⑥	SP-EP-083 TRIGGER SET W/ 2BOLTS & SPRING	②⑦	SP-EP-073 BATTERY CHARGER W/ KOREAN WARNING LABEL, CHARGING PLUG TYPE-C
⑦	SP-EP-084 GEAR PLATE FOR UPPER BLADE	②⑧	SP-EP-094 HOLSTER
⑧	SP-EP-085 PRUNER BODY W/ ENGLISH WARNING LABEL	②⑨	SP-EP-075 CHARGING PLUG TYPE-A
⑨	SP-EP-086 PRUNER BODY W/ PORTUGUESE WARNING LABEL	③①	SP-EP-076 CHARGING PLUG TYPE-C
⑩	SP-EP-087 PRUNER BODY W/ SPANISH WARNING LABEL	③②	SP-EP-077 CHARGING PLUG TYPE-O
⑪	SP-EP-088 PRUNER BODY W/ KOREAN WARNING LABEL	③③	SP-EP-078 SPRING ONLY FOR TRIGGER
⑫	SP-EP-089 FRONT COVER FOR PRUNER BODY	③④	SP-EP-095 HAND STRAP
⑬	SP-EP-058 "A" SCREW FOR PRUNER BODY (1 PC)	③⑤	SP-EP-096 PRUNER BODY W/ ENGLISH WARNING LABEL FOR TSE CERTIFICATE
⑭	SP-EP-060 BOLT FOR FRONT COVER FOR PRUNER BODY (1 PC)	③⑥	SP-EP-097 LITHIUM ION BATTERY W/ ENGLISH WARNING LABEL FOR TSE CERTIFICATE
⑮	SP-EP-061 POWER SWITCH PLATE	③⑦	SP-EP-098 BATTERY CHARGER W/ ENGLISH WARNING LABEL, CHARGING PLUG TYPE-C,O FOR TSE CERTIFICATE
⑯	SP-EP-090 INTERNAL MOTOR GEAR ASSEMBLY		
⑰	SP-EP-091 LCD BOARD SET		
⑱	SP-EP-092 CONTROL BOARD SET W/ 3 BOLTS		
⑲	SP-EP-093 SENSOR BOARD SET W/ 1 BOLT		
⑳	SP-EP-066 LITHIUM ION BATTERY W/ ENGLISH WARNING LABEL		
㉑	SP-EP-067 LITHIUM ION BATTERY W/ PORTUGUESE WARNING LABEL		